

THE

OS

NY

SCF

CONFERENCE

**The New York
Stem Cell**

Foundation

Invites you

to its

First Annual

Translational

Stem Cell

Research

Conference

Presented by:



October

23-24, 2006

Co-Sponsors:

Albert Einstein College of Medicine

Columbia University Medical Center

Helen and Martin Kimmel Center for Stem Cell Biology,
New York University School of Medicine

The Mount Sinai School of Medicine

Tri-Institutional Stem Cell Initiative:

The Rockefeller University, Memorial Sloan-Kettering
Cancer Center and Weill Medical College of Cornell
University



MONDAY
OCTOBER 23, 2006

THE NEW YORK
STEM CELL FOUNDATION
PUBLIC POLICY PANEL

Stem Cell Research: The Way Forward

LOCATION:
THE ROCKEFELLER UNIVERSITY
NEW YORK CITY

STARTING AT 5:30PM



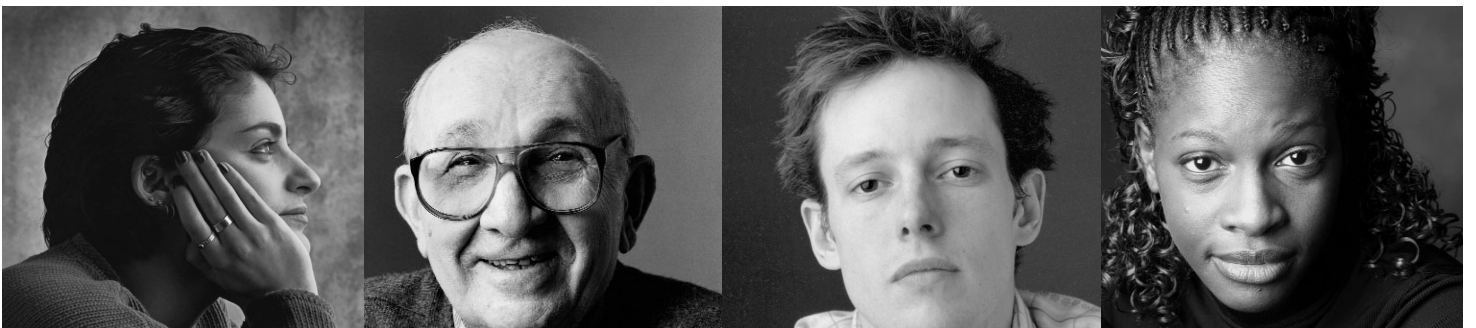
TUESDAY
OCTOBER 24, 2006

THE NEW YORK
STEM CELL FOUNDATION
TRANSLATIONAL STEM CELL
RESEARCH CONFERENCE

Curing Disease from Lab Bench to Bedside

LOCATION:
THE ROCKEFELLER UNIVERSITY
NEW YORK CITY

STARTING AT 8:30AM





CONFERENCE OVERVIEW

MONDAY, OCTOBER 23

The primary aim of the conference is to understand the potential of Human Embryonic Stem Cell research (HESC) in advancing the search for cures of the major diseases of our time.

Target Audience

The conference is designed for physicians, researchers, clinical investigators, professors, government and health officials, postdoctoral fellows, graduate students and others with an interest in stem cell research.

Educational Objectives

By the end of the conference, participants should be able to:

- Understand the techniques associated with and the potential of Somatic Cell Nuclear Transfer (SCNT);
- Know the current state of stem cell research being conducted in the United States as well as the advances made in the field by international experts;
- Recognize the advances stem cell research can contribute to a range of diseases, including Diabetes, Heart Disease, Cancer and Neurological Disorders.

Conference Registration Information

Early Registration

Early registration is preferred. The early registration fee, on and prior to September 22, 2006, is \$150. As of September 23, 2006, the registration increases to \$200. At any date, Residents and Fellows can register for \$150. Medical students are complimentary, but must register in advance.

Refund Policy

The registration fee is refundable with a written cancellation, less a \$65 administrative charge. No-shows are not eligible for a refund.

Substitution Policy

If you register for, but cannot attend the conference, you may substitute another individual. A substitution must be made in writing to the Conference Planner no later than October 1, 2006.

Cancellation Policy

This course is subject to cancellation, and in the event that it is canceled, NYSCF will refund your registration fee, but is not responsible for any airfare, hotel or other costs incurred by participants.

Conference Location

All sessions will be held at The Rockefeller University, Caspary Auditorium located at 1230 York Avenue at 66th Street.

Parking Information

Rockefeller Research Laboratories Garage
433 East 66th St. (between York & First Aves)
Tel: (212) 639-2338; Rates: \$32.00 per 24 hours.

Hotel Accommodations

A block of rooms has been reserved at the following hotels for the convenience of our participants.

The Bentley

500 East 62nd Street (62nd & York)
(212) 247-9700 ext. 7025

Discounted prices start at \$255 per night. **Mention Group Number 2310 at The Bentley Hotel; you must reserve prior to Sept. 21st for this rate.**

The Helmsley Medical Tower

1320 York Ave. (70th & 71st)
(212) 472-8400 or 1 800 HM Tower

Discounted price of \$210 per night. **Mention the NYSCF Stem Cell conference room block; you must reserve prior to October 6th for this rate.**

For further information, please contact:

Conference Planner

The New York Stem Cell Foundation
459 Columbus Ave. #610
New York, NY 10024

Tel: (917) 656-3149

Fax: (212) 595-7822

Email: conference@nyscf.org

CME Credit Provided by MSKCC, Course Director: Harold Varmus, MD

Conference Design

The conference is comprised of lectures and panel discussions, encouraging the exchange of ideas between faculty and participants.

Accreditation

The conference has been planned and implemented in accordance with the Essential Areas and policies of the Accreditation Council for Continuing Medical Education through the joint sponsorship of Memorial Sloan-Kettering Cancer Center and the New York Stem Cell Foundation. Memorial Sloan-Kettering Cancer Center is accredited by the ACCME to provide continuing medical education for physicians.

CME Credit

MSKCC designates this conference for a maximum of 8.5 hours in Category 1 credit towards the AMA Physician's Recognition Award. Physicians should only claim credit commensurate with the extent of their participation in the activity.

Disclosure Policy Statement

MSKCC relies upon faculty participants in its CME Program to provide educational information that is objective and is as free from bias as possible. In accordance with the nationally accepted guidelines, faculty are asked to indicate any commercial relationship that might be perceived as a real or apparent conflict of interest.

The New York Stem Cell Foundation Public Policy Panel *Stem Cell Research: The Way Forward*

A panel of scientists, advocates and international policy leaders from California to the United Kingdom, discuss challenges and solutions to supporting embryonic stem cell research.

Starting at 5:30pm at
Caspary Auditorium
The Rockefeller University
1230 York Ave. (at 66th Street)
New York, NY 10021

PANEL PARTICIPANTS INCLUDE:

David A. Carmel

Vice President, Business Development for StemCyte, Inc.

John Gearhart, PhD

Director, Stem Cell Program, Institute for Cell Engineering
Johns Hopkins Medicine

Angela McNab

Chief Executive Officer, Human Fertilisation & Embryology
Authority, United Kingdom

Douglas A. Melton, PhD

Co-director, Harvard Stem Cell Institute
Harvard University

Susan L. Solomon, JD

Chief Executive Officer
The New York Stem Cell Foundation

Laurie Zoloth, PhD

Director, Center for Bioethics, Science and Society, Chicago



**The New York Stem Cell Foundation
Translational Stem Cell
Research Conference**
*Curing Disease from Lab Bench
to Bedside*

8:00-8:30 Breakfast and Registration
8:30-8:35 **Mary Elizabeth Bunzel & Susan L. Solomon, JD:**
Introduction
8:35-8:40 **Paul Nurse, PhD:** Welcome

SCNT (Somatic Cell Nuclear Transfer)
CHAIR: HAROLD VARMUS, MD

8:40-9:00 **Kevin Eggan, PhD:** Interrogating Development and Disease by Somatic Cell Nuclear Transplantation
9:00-9:20 **Renee A. Reijo Pera, PhD:** Human Oocyte Potential in Reprogramming
9:20-9:40 **Ali H. Brivanlou, PhD:** Molecular basis of stemness in human embryonic stem cells
9:40-10:00 **Alison Murdoch, MD, FRCOG:** The clinical challenges of nuclear transfer.
10:00-10:15 **Panel Discussion**
10:15-10:25 **BREAK**

DIABETES & AUTO IMMUNE DISEASE
CHAIR: DOUGLAS A. MELTON, PhD

10:25-10:45 **Gordon Keller, PhD:** Lineage specific differentiation of embryonic stem cells
10:45-11:05 **Domenico Accili, MD:** Using stem cells to treat diabetes: fact or fiction?
11:05-11:25 **Allen M. Spiegel, MD:** Delivering on the Promise of Stem Cell Research: What Will it Take?
11:25-11:45 **Anthony Atala, MD:** Regenerative medicine: new approaches in health care for the 21st century
11:45-12:00 **Panel Discussion**
12:00-1:00 **LUNCH**

KEYNOTE

1:00-1:30 **Douglas A. Melton, PhD:** The Promise and Reality of Stem Cell Science

HEART DISEASE

CHAIR: JOHN GEARHART, PhD

1:30-1:50 **John Gearhart, PhD:** Embryonic stem cell-derived cardiomyocytes in heart repair
1:50-2:10 **Warren Sherman, MD:** Optimization of stem cell effects in post-ischemic myocardium
2:10-2:30 **Amit N. Patel, MD, MS:** Cell Therapy for the Heart
2:30-2:50 **Kenneth R. Chien, MD, PhD:** Heart Like Blood: Master Islet-1 cardiovascular stem cells and cardiopoiesis
2:50-3:05 **Panel Discussion**

CANCER

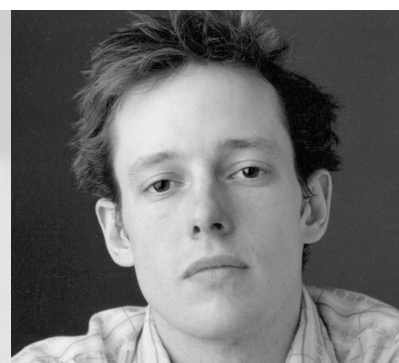
CHAIR: RUTH LEHMANN, PhD

3:05-3:25 **Shahin Rafii, MD:** Therapeutic stem cell transplantation for organ revascularization and tumor targeting: Are we ready for prime time?
3:25-3:45 **Konrad Hochedlinger, PhD:** Reprogramming cancer by nuclear transfer?
3:45-4:05 **Elaine Fuchs, PhD:** Skin stem cells and their lineages
4:05-4:20 **Panel Discussion**
4:20-4:35 **BREAK**

NEUROLOGY

CHAIR: THOMAS M. JESSELL, PhD

4:35-4:55 **Lorenz Studer, MD:** Directed Differentiation of Human Embryonic Stem Cells
4:55-5:15 **Hynek Wichterle, PhD:** Embryonic stem cells and acquisition of motor neuron identity
5:15-5:35 **Hongjun Song, PhD:** Mechanisms regulating adult neural stem cells
5:35-5:55 **Arnold R. Kriegstein, MD, PhD:** Neural Stem and Progenitor Cells in Cortical Development
5:55-6:10 **Panel Discussion**
6:10 **END OF PROGRAM**



Domenico Accili, MD Professor of Medicine, Director, Columbia Diabetes & Endocrinology Research Center, Columbia University

Anthony Atala, MD Director, Wake Forest Institute for Regenerative Medicine, Wake Forest University Health Sciences, Winston-Salem, NC

Ali H. Brivanlou, PhD Professor & Head of Laboratory, Laboratory of Molecular Embryology, The Rockefeller University

Mary Elizabeth Bunzel Executive Vice President, The New York Stem Cell Foundation

David A. Carmel Vice President, Business Development for StemCyte, Inc.

Kenneth R. Chien MD, PhD Director, MGH Cardiovascular Research Center, Charles Addison and Elizabeth Ann Sanders Professor, Department of Cell Biology, Harvard Medical School, Harvard Stem Cell Institute

Kevin Eggan, PhD Assistant Professor of Molecular and Cellular Biology, Assistant Investigator, Stowers Medical Institute, Harvard University

Elaine Fuchs, PhD Rebecca C. Lancefield Professor of Mammalian Cell Biology & Development, Howard Hughes Medical Institute, The Rockefeller University

John Gearhart, PhD C. Michael Armstrong Professor of Medicine, Director, Stem Cell Program, Institute for Cell Engineering, Johns Hopkins Medicine

Konrad Hochedlinger, PhD Assistant Professor of Medicine, Harvard Medical School and Harvard Stem Cell Institute, Cancer Center and Center for Regenerative Medicine, Massachusetts General Hospital

Thomas M. Jessell, PhD Claire Tow Professor, Biochemistry & Molecular Biophysics, Columbia University Medical Center. Investigator, Howard Hughes Medical Institute

Gordon Keller, PhD Professor, Department of Gene and Cell Medicine, Mount Sinai School of Medicine

Arnold R. Kriegstein, MD, PhD Professor of Neurology, Director, UCSF Institute of Regeneration Medicine, University of California, San Francisco

Ruth Lehmann, PhD Professor, NYU School of Medicine, Howard Hughes Medical Institute, Skirball Institute of Biomolecular Medicine, Developmental Genetics Program

Angela McNab Chief Executive Officer, Human Fertilisation & Embryology Authority, United Kingdom

Douglas A. Melton, PhD Co-director of the Harvard Stem Cell Institute, Chair of the Life Sciences Council, Harvard Faculty of Arts & Sciences, Thomas Dudley Cabot Professor of the Natural Sciences, Harvard Faculty of Arts & Sciences

Alison Murdoch, MD, FRCOG Professor of Reproductive Medicine, Newcastle Fertility Centre at Life, International Centre for Life, Newcastle upon Tyne, United Kingdom

Paul Nurse, PhD President, The Rockefeller University

Amit N. Patel, MD, MS Director, Center for Cardiac Cell Therapy, University of Pittsburgh Medical Center, Director of Clinical Research, University of Pittsburgh

Shahin Rafii, MD The Arthur Belfer Professor of Genetic Medicine, Director of the Ansary Center for Stem Cell Therapeutics, Weill Cornell Medical College, Investigator Howard Hughes Medical Institute

Renee A. Reijo Pera, PhD Co-director, Program in Human ES Cell Biology Associate Professor, Department of Obstetrics, Gynecology & RS, University of California at San Francisco

Warren Sherman, MD Director, Cardiac Cell-Based Endovascular Therapies, Center for Interventional Vascular Therapy, Columbia University Medical Center

Susan L. Solomon, JD Chief Executive Officer, The New York Stem Cell Foundation

Hongjun Song, PhD Assistant Professor of Neurology and Neuroscience, Institute for Cell Engineering, Department of Neurology, Johns Hopkins University School of Medicine

Allen M. Spiegel, MD The Marilyn and Stanley M. Katz Dean, Albert Einstein College of Medicine

Lorenz Studer, MD Associate Member, Developmental Biology Program & Division of Neurosurgery, Sloan-Kettering Institute for Cancer Research

Harold Varmus, MD President, Memorial Sloan-Kettering Cancer Center

Hynek Wichterle, PhD Assistant Professor, Columbia University

Laurie Zoloth, PhD Director, Center for Bioethics, Science and Society, Chicago

The New York Stem Cell Foundation gratefully acknowledges the following for their support: Albert Einstein College of Medicine, British Consulate-General, New York, Columbia University Medical Center, Helen and Martin Kimmel Center for Stem Cell Biology, New York University School of Medicine, The Mount Sinai School of Medicine, Tri-Institutional Stem Cell Initiative: The Rockefeller University, Memorial Sloan-Kettering Cancer Center and Weill Medical College of Cornell University

The New York Stem Cell Foundation:

Medical Advisory Board

Kevin Eggan, PhD
 Gerald D. Fischbach, MD
 John D. Gearhart, PhD
 Robin Goland, MD
 Lee Goldman, MD, MPH
 Antonio M. Gotto, Jr., MD
 Thomas M. Jessell, PhD
 Gordon Keller, PhD, PhD
 Ruth Lehmann, PhD
 Rudolph Leibel, MD
 Dan R. Littman, MD, PhD
 Douglas A. Melton, PhD
 Paul Nurse, PhD
 Herbert Pardes, MD
 Shahin Rafii, MD
 Allen M. Spiegel, MD
 Harold Varmus, MD

Board of Directors

Marilyn Breslow
 Mary Elizabeth Bunzel
 David A. Carmel
 Chuck Close
 Janet Felleman
 Roy Geronemus, MD
 Paul Goldberger
 Lisa Jonas
 Richard J. Massey, PhD
 Steven Rattner
 Susan L. Solomon

Leadership Council

Robert Bookman
 Chuck Close
 Richard L. Feigen
 April Gomik
 Marlene Hess
 Richard D. Kaplan
 Evelyn H. Lauder
 Steven Rattner
 A. Alfred Taubman
 Eve Chilton Weinstein
 John C. Whitehead



REGISTRATION FORM

*Translational Stem Cell Research Conference
Curing Disease from Lab Bench to Bedside
October 23-24, 2006*

Please send completed registration form with payment to:

**Conference Planner
The New York Stem Cell Foundation
459 Columbus Ave., #610
New York, NY 10024**

Tel: (917) 656-3149; Fax (212) 595-7822

Email: conference@nyscf.org

Or register online at www.nyscf.org/events.php

Before 09/22/06 \$150 Resident/Fellow \$150

As of 09/23/06 \$200 Medical Student Free

Name

Degree

Institution

Address

City

State

Zip/Mail Code

Telephone

Facsimile

E-mail

Please check one only:

Researcher Physician Nurse Resident Fellow
(Resident and Fellows, please include a copy of your institutional ID)

Credit Card Payment

Discover Mastercard Visa American Express

Name on Card

Card Number

Exp. date

Signature

Amount \$

**Make check/money order in US Dollars payable to:
The New York Stem Cell Foundation**